



Pump Simulator User Guide

Progressive International Electronics, Inc.

Revision Date: March 2022

Pump Simulator is a program developed by PIE to simulate up to 16 dispensers, eliminating the need for any physical hardware during the development process of integrating to our controllers.

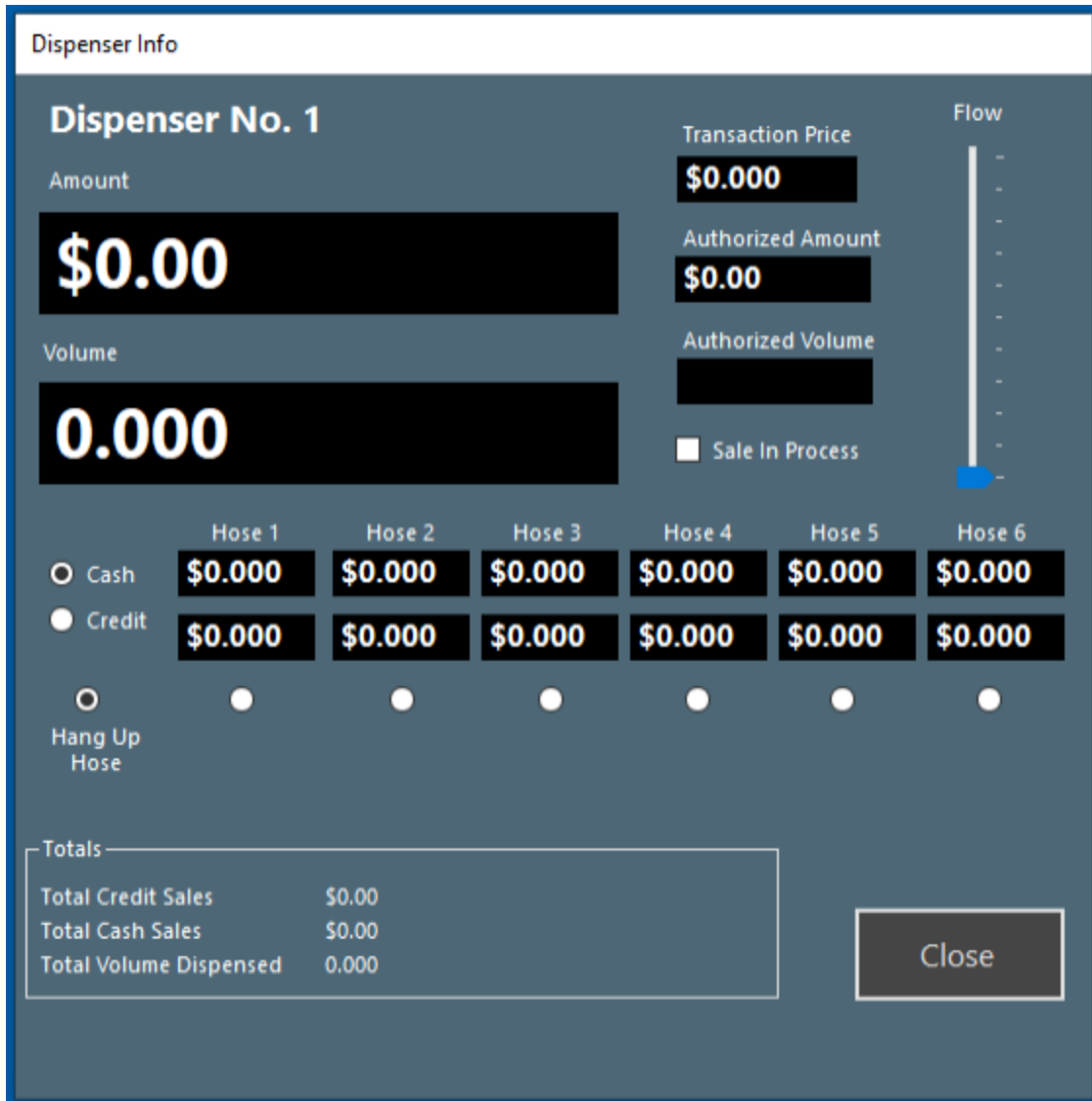
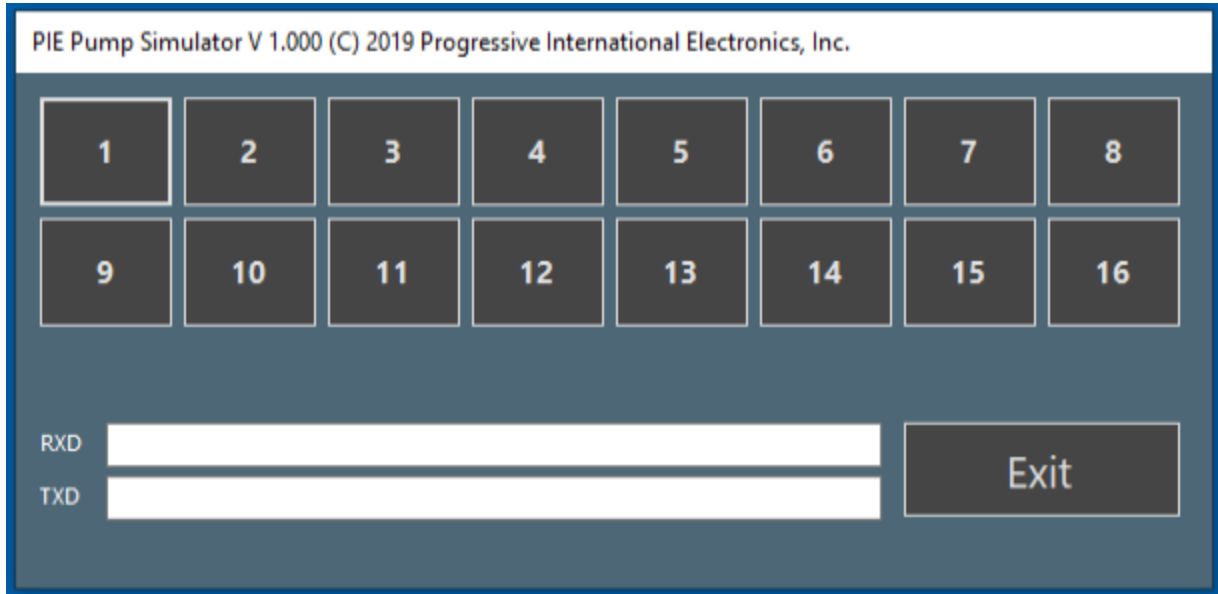
Setup and Use

The PIE controller must be set to use Generic protocol to use this simulator. If using the Pump Simulator on the same PC as the controller, use the IP Address of 127.0.0.1 in the configuration.

Run PumpSimulator.exe and select OK to use the default settings.

A screenshot of a Windows-style dialog box titled "Select Communication Port And Dispenser Settings". The dialog has a dark blue background. At the top, the title is in white text. Below the title, there are three input fields: a dropdown menu for "Port" with "Ethernet" selected, a text box for "Amount Decimals" containing the number "2", and a text box for "Volume Decimals" containing the number "3". Below these, there is a text box for "Price Decimals" containing the number "3". At the bottom of the dialog, there are two buttons: "Cancel" and "OK".

Select the Pump number to open the pump face for that Pump ID.



This is the dispenser face for Pump ID 1. It is possible to have multiple dispensers open at the same time to simulate a large site.

Steps to complete a transaction. *(The controller must be properly configured and prices must be sent to at least Hose 1 of each fueling position in use.)*

- Select the radio button below the Hose number that you want to use
- Select Cash or Credit
- Authorize the pump from the controller
- Move the slider for the Flow to begin fuel flow
- When sale is complete, move the Flow slider back to the bottom to end flow, then select the Hang Up Hose radio button
- The PIE controller should have the Sale Ready bit set. Clear the sale using the controller.